

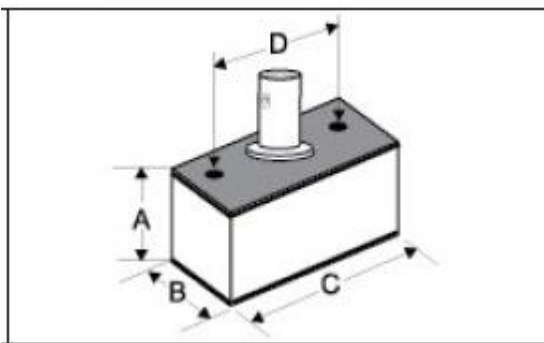
DAKOTA ULTRASONICS

STANDARD SHEAR WAVE TRANSDUCERS

STANDARD SHEAR WAVE TRANSDUCERS (SS)



Element Size (Dia.)	A	B	C	D
.500" x .500"	.650"	.750"	1.125"	.810"
.500" x 1.00"	.650"	.750"	1.625"	1.312"
.625" x .625"	.650"	.850"	1.350"	1.000"



Description:	Shear wave transducers designed to use a variety of angle beam wedges for general weld inspection & A.W.S, and constructed in a low noise plastic or stainless steel housing.
Used:	General weld inspection.
Damping:	High gain (G), Resolution (R) *Specify damping after (SS), No damping on 1MHz - Composite.
Connectors:	BNC (B), Microdot (M) *Specify connector after part #

Element Size	**1.0 MHz	2.25 MHz
.500" x .500"	PSS50501	SS50502
.500" x 1.00"	PSS50101	SS50102
.625" x .625"	PSS62621	SS62622

WEDGES (SAPATAS)

STANDARD WEDGES (SW)



Element Size	45°	60°	70°
.500" x .500"	SW5045	SW5060	SW5070
.500" x 1.00"	SW5145	SW5160	SW5170
.625" x .625"	SW6245	SW6260	SW6270

