

▶ THE FUTURE IS NOW



GO-SCAN C-VIEW

Real-time X-Ray Inspection

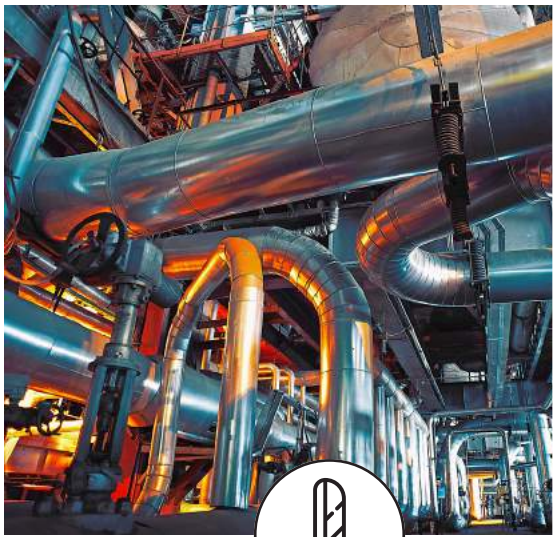


TELEDYNE ICM
Everywhereyoulook™

Part of the Teledyne Imaging Group

Real-time X-Ray Inspection

Go-Scan C-view is a light weight ruggedized live video X-ray imaging system specifically designed for hand-held inspection. It includes a high speed and high resolution CMOS imager and a battery-operated 70kV x-ray tube designed for portable field operation. The video imaging system captures images and displays them on a hand held display in real-time.



LIGHT-WEIGHT



RUGGEDIZED



LIVE VIDEO

	Unit	GO-SCAN C-View
Active area	cm/in	15 x 10/6 x 4
Weight	kg/lbs	<6.5/14.3
Pixel pitch	µm	100
Video framerate	fps	Up to 30 fps
Energy range	kV	40 - 70
Adjustable arm length	cm/in	30-60/12-24
IP rating		65
Communication		Wired or Wireless



TELEDYNE ICM
Everywhere you look™
Part of the Teledyne Imaging Group

For more information visit

<http://www.teledyneicm.com/ndt/x-ray-detectors/>